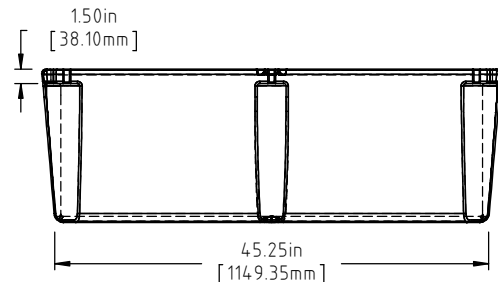
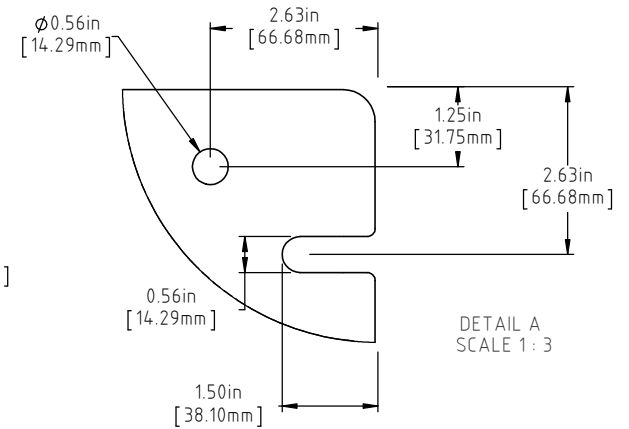
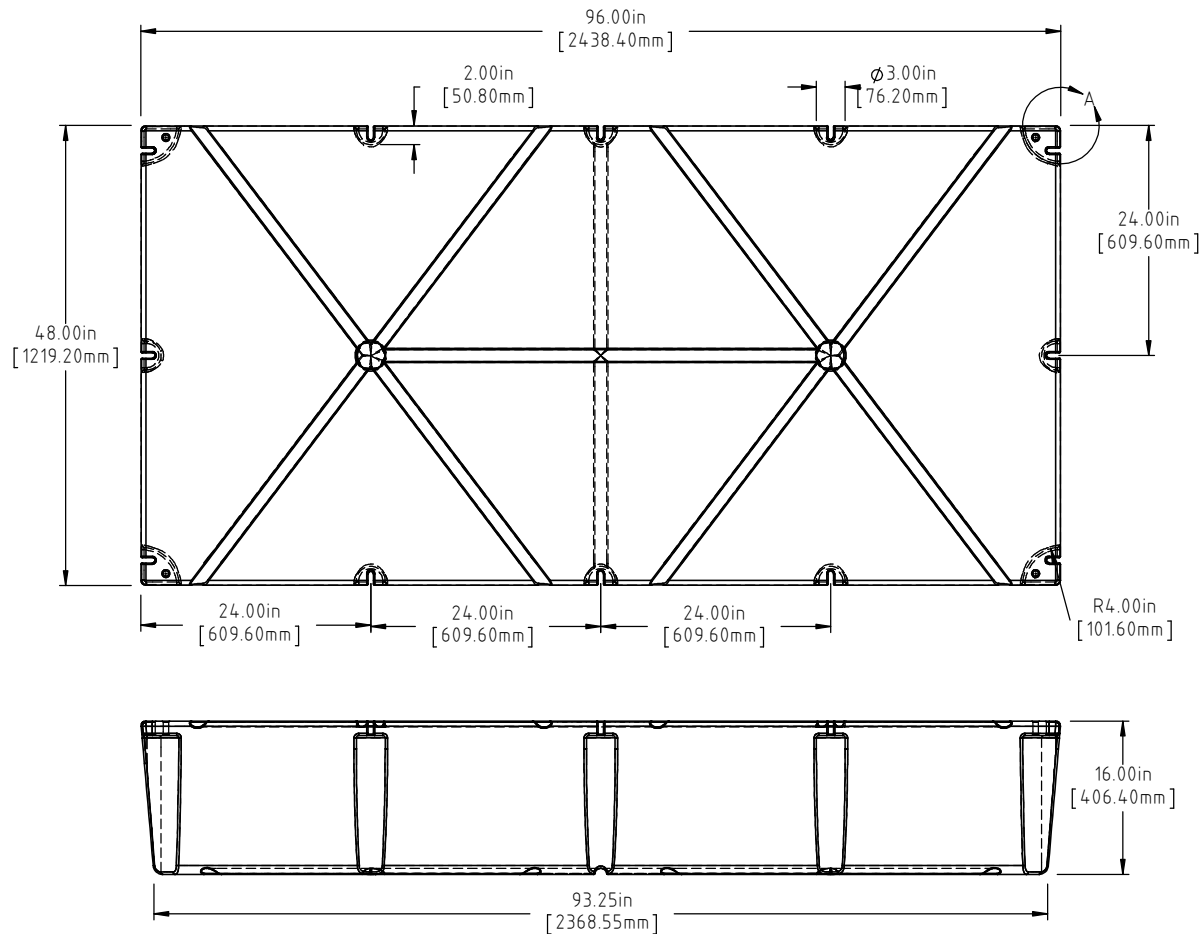


Copyright. All information furnished within this document, electronic file or design correspondence is the property of Den Hartog industries, Inc. and shall not be used, disclosed to others or copied without the expressed written consent of Den Hartog Industries, Inc.

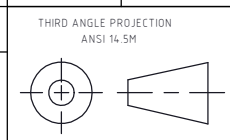


(A) (C)  
 NOTE: BUOYANCY 2396.00 LBS.(1086.81 KG.)

C	131 LBS WAS 124 LBS, 2396 LBS WAS 2420 LBS	ADH 6/27/12	2420
B	METRIC DIMENSIONS ADDED	ADH 6/23/08	1685
A	ADD BUOYANCY NOTE	GWC 1/11/07	
A	CHANGE WEIGHT AF WAS 82 FF WAS 134	GWC 1/11/07	
1	CHANGE WEIGHT	11/17/94	
REV	DESCRIPTION	BY / DATE	CCN

DRAWN / DATE	MATERIAL
DEAN 11/17/94	POLYETHYLENE
APPRD. / DATE	
ADH 11/6/07	

ALL DIMENSIONS ARE IN DECIMAL INCHES  
 TOLERANCES UNLESS OTHERWISE SPECIFIED  
 POLYETHYLENE METAL  
 DECIMAL  $\pm .125"$   
 FRACTION  $\pm 1/4"$   
 ANGLE  $\pm 1^\circ$   
 $\pm 1\%$  @ 68°F



SHOT WEIGHT:  
 84 LBS.(38.10 KG.)  
 SHIPPING WEIGHT:  
 SEE NOTES  
 FINISH:

NOTES: (A) (C)  
 1.) AF 84 LBS.(38.10 KG.)  
 2.) FF 131 LBS.(59.42 KG)  
 3.) 0.150in(3.81mm) NOM.  
 WALL

**Den Hartog**  
 INDUSTRIES, INC.

Acro Roto-Mold Injection Molding Blow Molding Blow Jey

4010 HOSPERS DRIVE S. BOX 425, HOSPERS, IOWA 51238-0425

DESCRIPTION		48 X 96 X 16 FLOAT
SCALE	PART NO.	
N.S.	4896-16	