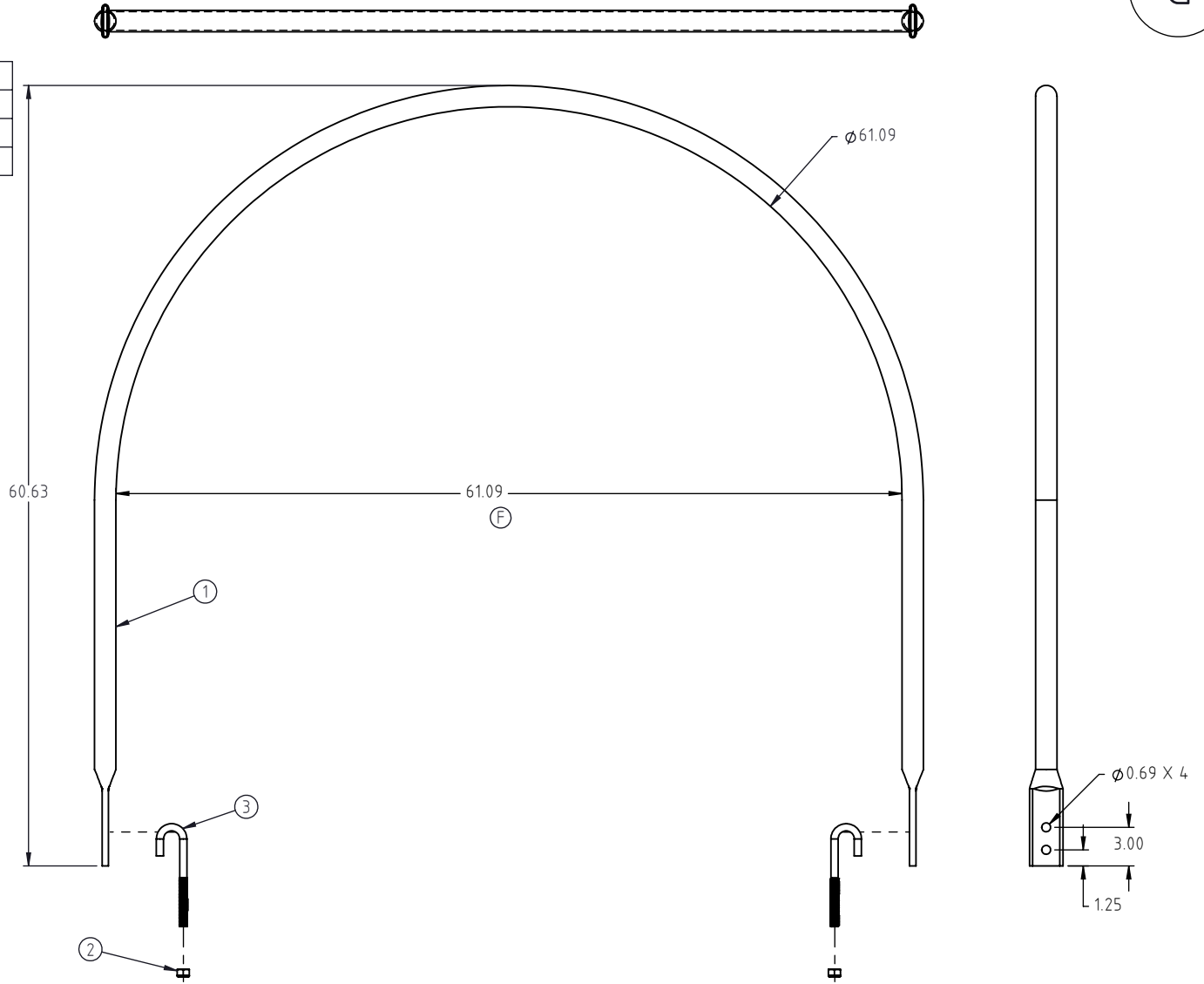


Copyright. All information furnished within this document, electronic file or design correspondence is the property of Den Hartog industries, Inc. and shall not be used, disclosed to others or copied without the expressed written consent of Den Hartog Industries, Inc.

ITEM NO.	PART NUMBER	DESCRIPTION	QTY.
1	T1660X1090	1.66 RD 12 GA TUBING	1
2	10938	NUT, 5/8" NYLOK GR 2 ZINC	2
3	J.625X8.000	J-BOLT, 5/8" X 8" PLATED	2



FS062-HP-925 2 HOOPS

Ⓔ FS062-HP-1300 3 HOOPS
ALSO FOR 1310

FS062-HP-1750 4 HOOPS

FS062-HP-1800C 4 HOOPS
2 WITH CLIPS

FS062-HP-2600C 6 HOOPS
2 WITH CLIPS

G	ADD 155" BLANK LENGTH	BES	7/26/2024	4621	DRAWN / DATE	MATERIAL: MILD STEEL
F	CHANGED DIAMETER TO 61.09	SAS	4/9/2024	4586	DHJ 2/2/2003	
E	ADDED 1310 REFERENCE	BPL	12/18/2020	4076	APPRD. / DATE	NOTES: BLANK LENGTH AT 155" Ⓔ
REV.	DESCRIPTION	BY	DATE	CCN	REH 11/8/2007	
ALL DIMENSIONS ARE IN DECIMAL INCHES TOLERANCES UNLESS OTHERWISE SPECIFIED		THIRD ANGLE PROJECTION ANSI 14.5M			SHOT WEIGHT:	FINISH: Powder Coat
POLYETHYLENE ±1% @ 68°F		METAL DECIMAL ± .125" FRACTION ± 1/4" ANGLE ± 1°			SHIPPING WEIGHT: 24.00 LBS	



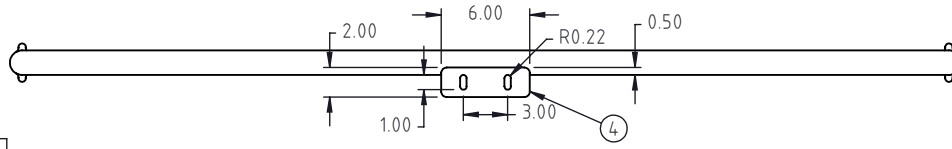
**Den Hartog
INDUSTRIES, INC.**

Ace Roto-Mold • Injection Molding • Blow Molding • Sowjoy
4010 HOSPERS DRIVE S. BOX 425, HOSPERS, IOWA 51238-0425

DESCRIPTION FS, HOOP 62" SINGLE HOOP		SHEET 1 OF 1	
SCALE N.S.	PART NO. FS062-HPS		

© DEN HARTOG INDUSTRIES, INC.

Copyright. All information furnished within this document, electronic file or design correspondence is the property of Den Hartog industries, Inc. and shall not be used, disclosed to others or copied without the expressed written consent of Den Hartog Industries, Inc.



FS062-HPC

E

ITEM NO.	PART NUMBER	DESCRIPTION	QTY.
1	T1660X1090	1.66 RD 12 GA TUBING	1
2	10938	NUT, 5/8" NYLOK GR 2 ZINC	2
3	J.625X8.000	J-BOLT, 5/8" X 8" PLATED	2
4	SJFS1800-2600C	CLIP, 1/4" X 2" X 6"	1

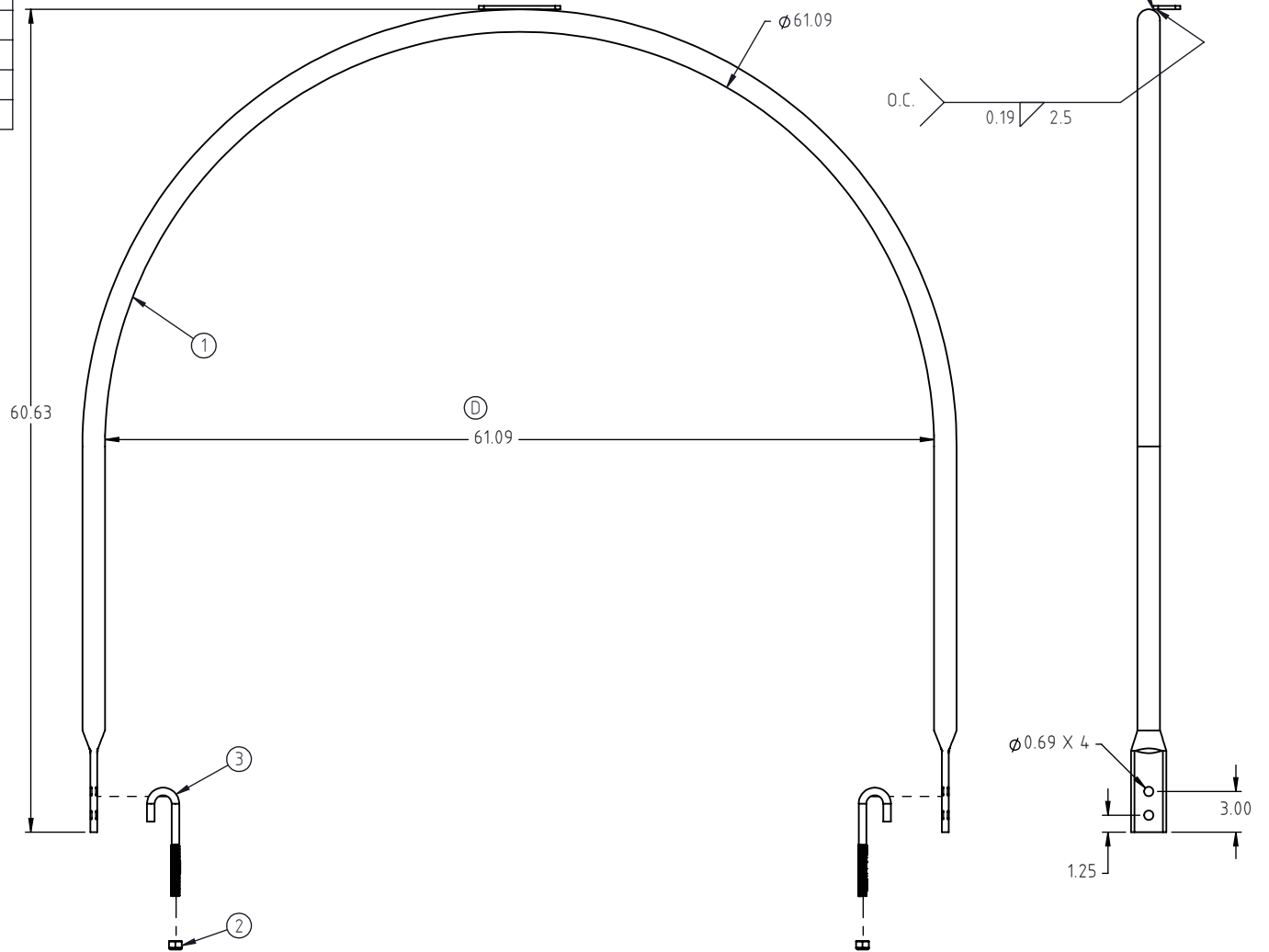
FS062-HP-925 2 HOOPS

FS062-HP-1300 3 HOOPS
ALSO FOR 1310

FS062-HP-1750 4 HOOPS

FS062-HP-1800C 4 HOOPS
2 WITH CLIPS

FS062-HP-2600C 6 HOOPS
2 WITH CLIPS



E	ADD 155" BLANK LENGTH	BES	7/26/2024	4621	DRAWN / DATE	MATERIAL: MILD STEEL
D	CHANGED DIAMETER TO 61.09	SAS	4/9/2024	4586	DHJ 2/21/2003	
C	TOLERANCE WAS 1% AT 68F	GWC	3/16/07		APPRD. / DATE	NOTES: BLANK LENGTH AT 155" E
REV.	DESCRIPTION	BY	DATE	CCN	ADH 11/9/2007	
ALL DIMENSIONS ARE IN DECIMAL INCHES TOLERANCES UNLESS OTHERWISE SPECIFIED		THIRD ANGLE PROJECTION ANSI 14.5M		SHOT WEIGHT:		DESCRIPTION FS, HOOP 62" W/ CLIP SINGLE HOOP
POLYETHYLENE ±1% @ 68°F		METAL DECIMAL ± .125" FRACTION ± 1/4" ANGLE ± 1°		SHIPPING WEIGHT: 25 LBS.		
		FINISH: Powder Coat				



**Den Hartog
INDUSTRIES, INC.**

Ace Roto-Mold • Injection Molding • Blow Molding • Sowjoy
4010 HOSPERS DRIVE S. BOX 425, HOSPERS, IOWA 51238-0425

SCALE	N.S.	PART NO.	FS062-HPC	SHEET	1 OF 1
-------	------	----------	-----------	-------	--------