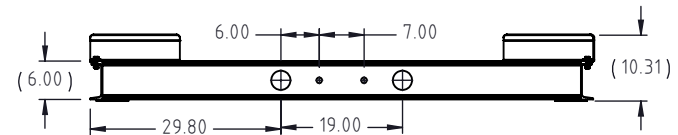
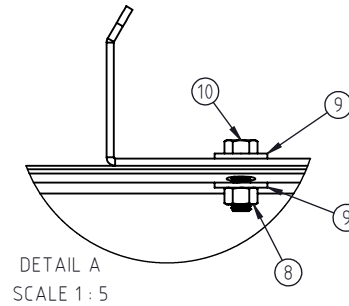
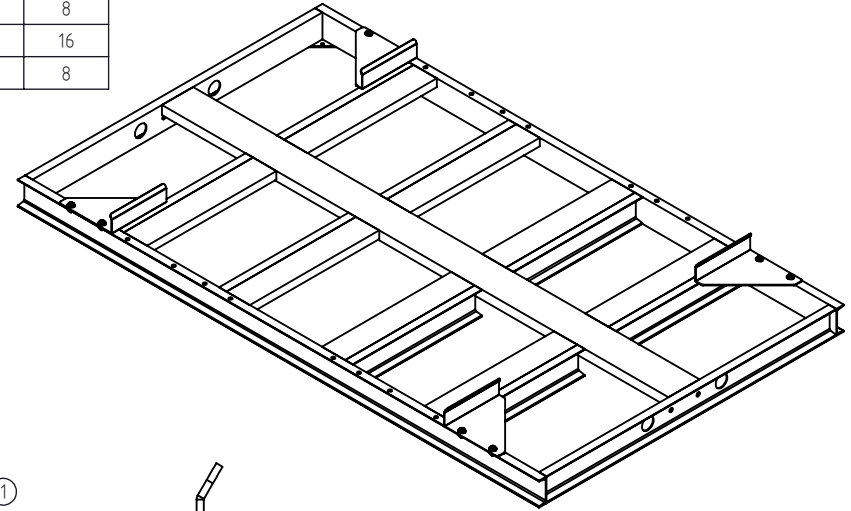
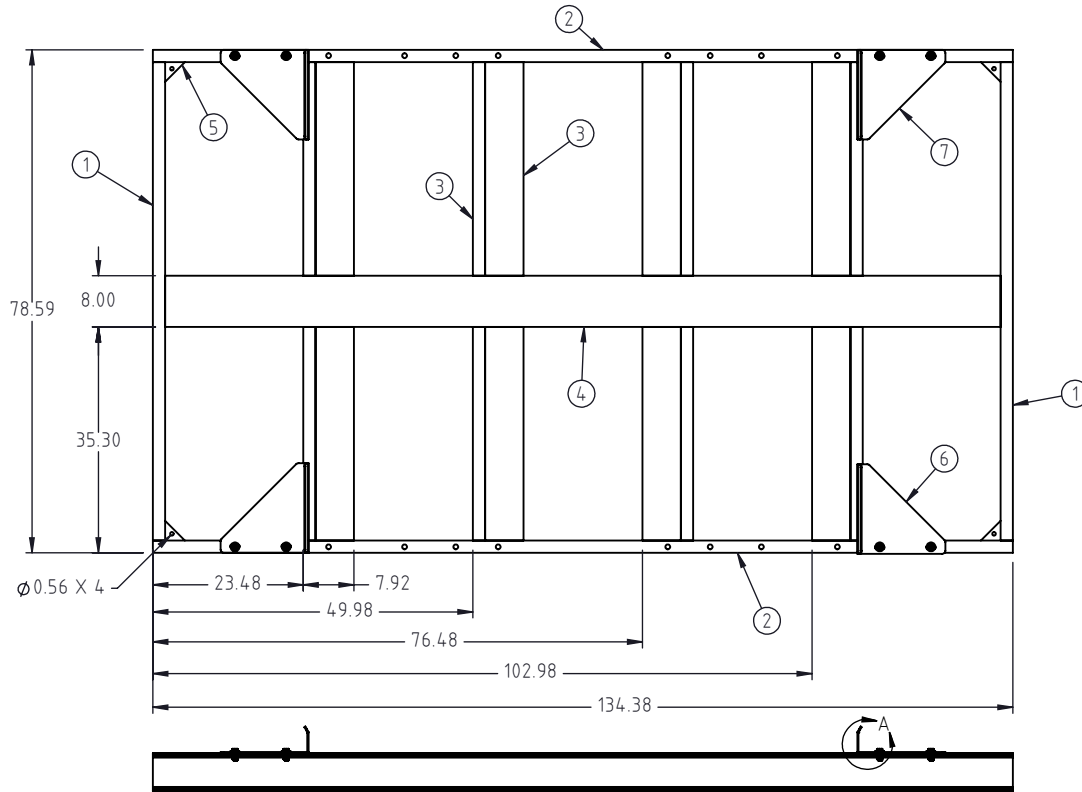


© DEN HARTOG INDUSTRIES, INC.

Copyright. All information furnished within this document, electronic file or design correspondence is the property of Den Hartog industries, Inc. and shall not be used, disclosed to others or copied without the expressed written consent of Den Hartog Industries, Inc.

ITEM NO.	PART NUMBER	DESCRIPTION	QTY.
1	FS1610-1850-SK-1	FS, SKID 1610/1850 END CHANNEL	2
2	FS1610-1850-SK-2	FS, SKID 1610/1850 SIDE CHANNEL	2
3	FS1610-1850-SK-3	FS, SKID 1610/1850 SUPPORT CHANNEL	16
4	FS1610-1850-SK-4	FS, SKID 1610/1850 CENTER SUPPORT	1
5	12411	5" X 5" GUSSET	4
6	FS10026	RETAINING PLATE RIGHT HAND	2
7	FS10027	RETAINING PLATE LEFT HAND	2
8	10126	NUT, 1/2" -13 HEX GR 2 ZINC	8
9	10323	WASHER, 1/2" FLAT ZINC	16
10	10695	BOLT, 1/2" X 1-1/2" GR 5 ZINC	8

FS1610-1850-SK



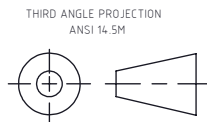
DRAWN / DATE SAS 10/5/2023	MATERIAL : SEE COMPONENTS
APPRD. / DATE BES 10/30/2023	
SHOT WEIGHT:	NOTES:
SHIPPING WEIGHT: 750 LBS.	
FINISH: Powder Coat	



**Den Hartog  
INDUSTRIES, INC.**

Ace Roto-Mold • Injection Molding • Blow Molding • Sowjoy  
4010 HOSPERS DRIVE S. BOX 425, HOSPERS, IOWA 51238-0425

REV.	DESCRIPTION	BY	DATE	CCN
	ALL DIMENSIONS ARE IN DECIMAL INCHES TOLERANCES UNLESS OTHERWISE SPECIFIED			
	<u>POLYETHYLENE</u>			
	<u>METAL</u> DECIMAL ± .125" FRACTION ± 1/4" ANGLE ± 1°			
	±1% @ 68°F			



DESCRIPTION FS, SKID 1610/1850 GAL	PART NO. FS1610-1850-SK	SHEET 1 OF 1
SCALE N.S.		