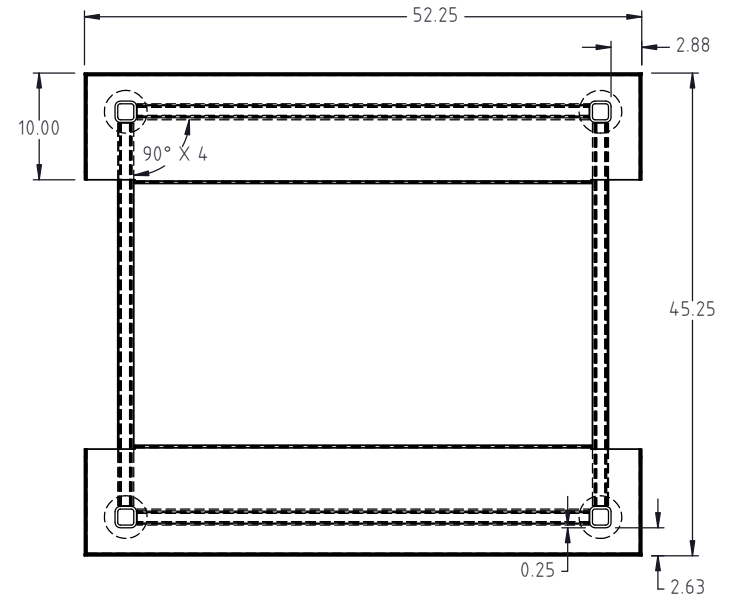
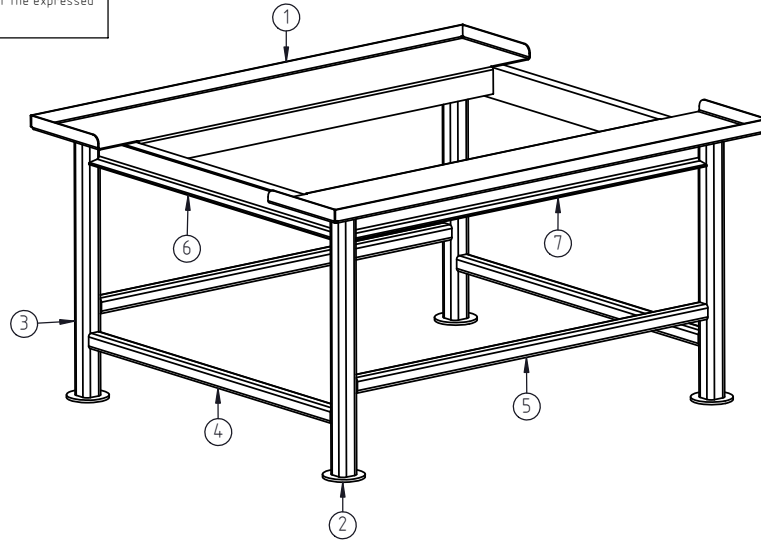
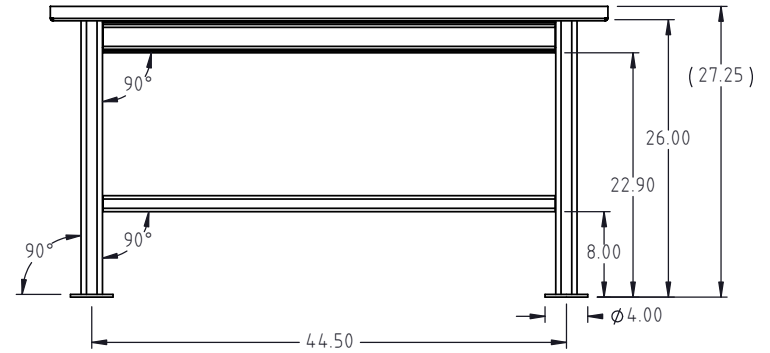
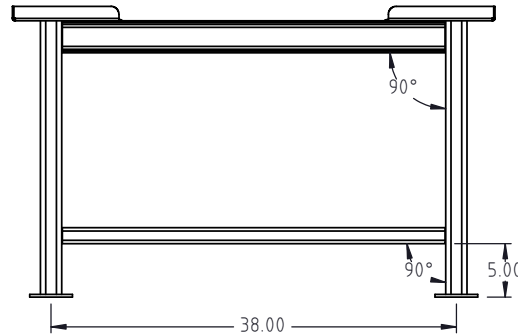


Copyright. All information furnished within this document, electronic file or design correspondence is the property of Den Hartog Industries, Inc. and shall not be used, disclosed to others or copied without the expressed written consent of Den Hartog Industries, Inc.



KEY	PART NUMBER	DESCRIPTION	MATERIAL	QTY.
1	IBC15482-ST-1	STAND TOP PLATE	SHEET, 12GA MILD STEEL A36	2
2	IBC15482-ST-2	FOOT PAD	SHEET, 1/4" MILD STEEL A36	4
3	IBC15482-ST-3	LEG SQ. TUBE	TUBING, 2" SQUARE 1/4" MILD STEEL	4
4	IBC15482-ST-4	SUPPORT SQ. TUBE A	TUBING, 1 1/2" SQUARE MILD STEEL 3/16" WALL	2
5	IBC15482-ST-5	SUPPORT SQ. TUBE B	TUBING, 1 1/2" SQUARE MILD STEEL 3/16" WALL	2
6	IBC15482-ST-6	SUPPORT CHANNEL A	CHANNEL, 3" MILD STEEL A36	2
7	IBC15482-ST-7	SUPPORT CHANNEL B	CHANNEL, 3" MILD STEEL A36	2



REV.	DESCRIPTION	BY	DATE	CCN
	ALL DIMENSIONS ARE IN DECIMAL INCHES TOLERANCES UNLESS OTHERWISE SPECIFIED			
	POLYETHYLENE ±1% @ 68°F			
	METAL DECIMAL ± .125" FRACTION ± 1/4" ANGLE ± 1°			

DRAWN / DATE ADH 10/15/2024	MATERIAL : SEE COMPONENTS
APPRD. / DATE BES 10/24/2024	
SHOT WEIGHT:	NOTES: 1.) DO NOT EXCEED 12000 LBS. TOTAL WEIGHT RATING.
SHIPPING WEIGHT: 195.00 LBS.	
FINISH:	

Den Hartog INDUSTRIES, INC.

Ace Roto-Mold • Injection Molding • Blow Molding • Sowjoy
4010 HOSPERS DRIVE S. BOX 425, HOSPERS, IOWA 51238-0425

DESCRIPTION IBC DISPENSING STAND	
SCALE N.S.	PART NO. IBC15482-ST
SHEET 1 OF 1	

